

Workforce Focus

Sarnia Lambton Workforce Development Board

Professional, Scientific, and Technical Services

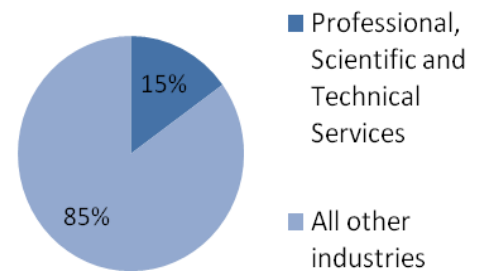
This sector comprises establishments primarily engaged in activities in which human capital is the major input. These establishments make available the knowledge and skills of their employees, often on a contract basis.

The main components of this sector are legal services industries, accounting and related services industries, architectural, engineering and related services industries, surveying and mapping services industries, design services industries, management, scientific and technical consulting services industries, scientific research and development services industries, and advertising services industries.

The distinguishing feature of this sector is the fact that most of the industries grouped in it have production processes that are almost wholly dependent on worker skills. In most of these industries, equipment and materials are not of major importance. Thus, the establishments classified in this sector sell expertise.

In Ontario, the Professional, Scientific and Technical Services sector accounted for 15% of all businesses in 2010 and employed over 415,000 people.

Businesses in Ontario

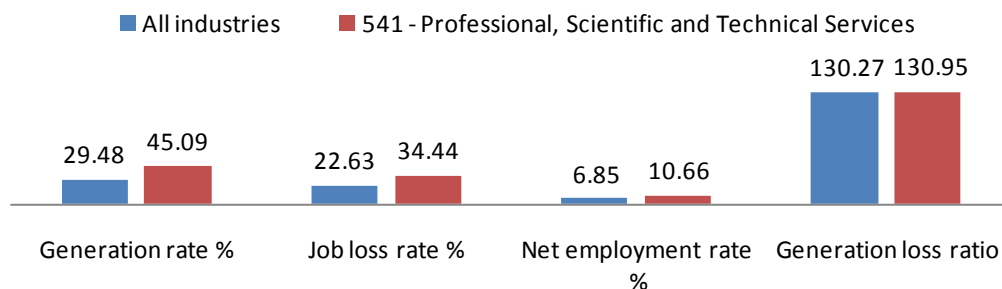


Source: Statistics Canada, North American Industry Classification System

Source: Canadian Business Patterns, December 2010

Positive Net Employment Across Ontario

Labour Market Adjustment Dynamics

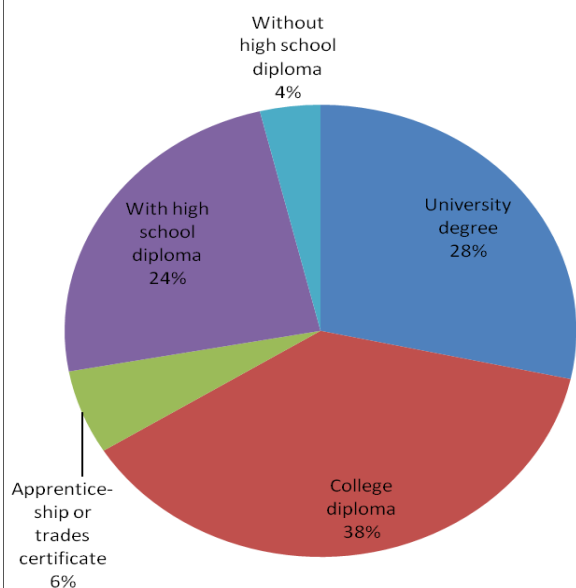


Across Ontario, the Professional, Scientific and Technical Services sector saw a job generation rate of 45.09% from 2001 to 2006. This means that the number of jobs in this industry increased by 45.09% over this time period. In addition, this industry saw a generation loss ratio of 130.95 which means there are 131 jobs created in the Professional, Scientific and Technical Services sector for every 100 jobs lost. This creates a positive net employment in this industry and a strong employment outlook in this sector.

Source: Statistics Canada, Longitudinal Employment Analysis Program, 2006

Professional, Scientific and Technical Services in Lambton

Educational Attainment



High Levels of Education

Much of the expertise related to work in this industry requires a university or college education, though not in every case. According to census data, this industry tends to have higher educational levels compared to all other industries. In Lambton 71% of people employed in the Professional, Scientific and Technical Services sector have attained post-secondary education; the majority of which have completed a college diploma.

Source: Statistics Canada, Census 2006

Labour Force by Field of Study

Among local workers employed in the Professional, Scientific and Technical Services sector, 71% have attained post-secondary schooling. This list examines the major field of study for participants in this industry.

Field of Post-Secondary Study	# employed	% employed
Education	40	1.42%
Visual and performing arts, and communications technologies	50	1.78%
Humanities	65	2.31%
Social and behavioural sciences and law	200	7.10%
Business, management and public administration	405	14.39%
Physical and life sciences and technologies	160	5.68%
Mathematics, computer and information sciences	110	3.91%
Architecture, engineering, and related technologies	800	28.42%
Agriculture, natural resources and conservation	35	1.24%
Health, parks, recreation and fitness	150	5.33%
Personal, protective and transportation services	40	1.42%

Source: Statistics Canada, Census 2006

Top 5 Occupations in Lambton

NOC	Occupational title	# employed in Lambton	% of total employment	Median income	
				Lambton	Ontario
1231	Bookkeepers	135	5.60%	\$30,504	\$33,662
2132	Mechanical engineers	120	4.98%	\$90,953	\$72,553
1111	Financial auditors and accountants	105	4.36%	\$52,211	\$58,931
2211	Chemical technologists and technicians	105	4.36%	\$88,325	\$51,800
4112	Lawyers and Québec notaries	90	3.73%	\$156,959	\$111,417

In Lambton, most of the top 5 occupations in this sector obtain a significantly higher income compared to Ontario. In addition, these occupations require knowledge attained through higher education.

Source: Statistics Canada, Census 2006

**EMPLOYMENT
ONTARIO**

FOR MORE LABOUR MARKET INFORMATION

VISIT WWW.SLTB.ORG

Workforce Planning
Ontario
www.workforceplanningontario.ca